

Aquawood DSL HighRes

59127 ff

Water-based **wood glaze** for **wooden windows** and **front doors** for **industrial and professional use**

It has been matched as a system with a **3-coat structure**

PRODUCT DESCRIPTION

General

Water-based, breathable thick-film glaze, with very good weather resistance and high transparency. High block resistance, fast water resistance, environmentally friendly. Highest weather resistance due to innovative, extremely long-lasting protective mechanisms against UV radiation. The product is formulated without the addition of biocidal active agents to protect against blue stain and wood-destroying fungi.

Special properties and standards



- **DIN 53160-1 and DIN 53160-2** perspiration and saliva-proof properties
- **ÖNORM EN 71-3** Safety of toys; migration of certain elements (free of heavy metals)
- **French ordinance DEVL1104875A** regarding the marking of construction coating products for their emission of volatile pollutants: A+

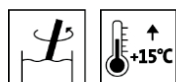
Application area



- For dimensionally stable timber components for exterior and interior use, such as e.g. wooden windows and front doors, etc.
- Not suitable for humid areas (e.g. indoor pools).
- For non-dimensionally stable timber components we recommend thin-film systems such as Pullex Plus-Lasur 50314 or Pullex Aqua-Plus 53101.
- Please observe the relative technical data sheets of the products.

PROCESSING

Instructions for use



- Please stir the product before use. However, prevent entry of air while stirring.
- The temperature of the product and object, and the room temperature must be at least + 15 C.
- The optimal conditions for use are between 15 – 25 °C with a relative atmospheric humidity between 40 – 80 %.
- Too high dry film thicknesses beyond around 120 µm reduce the diffusion capacity and should thus be avoided.
- Sealants must be compatible with the coat and may only be

08-20 (supersedes 04-16) ZKL 5103

ADLER-Werk Lackfabrik, A-6130 Schwaz

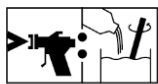
Phone: 0043/5242/6922-190, Fax: 0043/5242/6922-309, email: technical-support@adler-lacke.com

Our instructions for use are based on knowledge available currently and shall guide the buyer/user to the best of one's knowledge, but, however, must be clarified for the areas of application and processing conditions on a case-to-case basis. The buyer/user is responsible for deciding on the suitability and use of the delivered product, which is why it is recommended to produce a sample to check the suitability of the product. Our general terms and conditions of sale are otherwise applicable. All previous data sheets are rendered invalid with the issue of this one. Rights reserved for the modification of the container sizes, colour shades and degrees of gloss available.

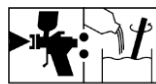
applied once the paint has dried through. Sealing profiles with plasticizers tend to stick together in combination with paints. Please only use those types that have been tested.

- We do not recommend applying two layers of Aquawood DSL HighRes 59127 ff with intermediate sanding, because due to the content of a matting wax, a polishing effect and therefore a poor intermediate adhesion is possible.
- An intermediate coating with Aquawood Intermedio ISO 53613 ff is recommended to prevent air inclusions in deep-pored hardwood species and to avoid film interference on larch.
- When changing from Aquawood DSL HighRes 59127 ff to other water-based paint systems, care must be taken to adequately clean the pipes and spray equipment, preferably with warm water.
- Please follow our **ARL 300 - Working guideline for coating dimensionally stable and limited dimensionally stable construction elements - General part** along with all standards and guidelines for window construction.

Application technique



0-5% H₂O



10% H₂O

Application method	Airless	Airless air-supported (Airmix, Aircoat, etc.)	Cup gun
Spray nozzle (ø mm)	0.28 or 0.33	0.28 or 0.33	1.8 – 2.0
Spray nozzle (ø inch)	0.011 or 0.013	0.011 or 0.013	-
Spraying angel (degrees)	20 – 40	20 – 40	-
Spraying pressure (bar)	80 – 100	80 – 100	3 – 4
Atomized air (bar)	-	0,5 – 1,5	-
Spraying distance (cm)	approx. 25		
Thinner	water		
Thinner amount added in %	0 – 5	0 – 5	0 – 10
Wet film (µm)	225 - 275		
Yield per application (g/m ²) ¹⁾	450 - 500		
Dry film complete coating system (µm)	80 up to max. 120		
¹⁾ Yield including addition of thinner and loss while spraying			

The shape, the properties and moisture of the substrate affect the consumption/yield. Accurate values for consumption must be obtained by applying trial coats in advance.

Drying times

(at 23 °C and 50 % rel. humidity)



Dust-dry (ISO 1517)	after approx. 1 hour
Tack-free	after approx. 2 hours
Stackable with PE fine foam spacers at room temperature:	after approx. 4 hours
Stackable with PE fine foam spacers after forced drying: 20 min flash-off zone 90 min drying stage (35– 40 °C) 20 min cooling stage	after approx. 130 min.
Recoatable	after approx. 12 hours

The figures given above are reference values. The drying time depends on the type of substrate, coat thickness, temperature, air exchange and relative atmospheric humidity.

Lower temperatures and/or high level of atmospheric humidity can increase the drying time.

Avoid direct sunlight (very quick drying).

Cleaning the working equipment



With water immediately after use.

To remove dried paint residues we recommend using ADLER Aqua-Cleaner 80080 (diluted 1:1 with water).

SUBSTRATE

Type of substrate

Wood in accordance with the guidelines for window construction.

Substrate property

The substrate must be dry, clean, capable of holding the paint, free from separating substances such as grease, wax, silicone, resin etc. and free from wood dust, as well as tested for suitability for coating.

Wood moisture

Dimensionally stable construction elements: 13 % +/- 2 %

COATING SYSTEM

General

The following coating systems are exemplary.

Impregnation

1 x Aquawood Primo A3 - A6 5453000310 ff

Intermediate drying: approx. 4 hours

Use wood preservatives safely. Always read the label and observe the relative technical data sheets of the products before use.

Intermediate coat

1x Aquawood Intermedio HighRes MF 59119 and/or
1x Aquawood Intermedio HighRes Spritzfertig 59120

Intermediate drying: approx. 2 hours

Please observe the relative technical data sheets of the products.

Intermediate sanding

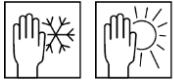
Grit size 220 - 240

Remove sanding dust.



Finishing coat	1x Aquawood DSL HighRes 59127 ff
MAINTENANCE AND RENOVATION	
Maintenance and renovation	<p>The durability depends on several factors: these include particularly the type of weathering, constructional protection, mechanical stress and the choice of colour applied. To obtain long durability, preservation work is necessary in time. Therefore, we recommend annual maintenance.</p> <p>Cleaning with ADLER Top-Cleaner 51696. Maintenance with ADLER Top-Care 7227000210 in the package ADLER Windoor Care-Set 7229000300.</p> <p>Please observe the relative technical data sheets of the products.</p> <p>Please follow our ARL 304 - Working guideline for coating dimensionally stable and limited dimensionally stable construction elements - Maintenance and renovation.</p>
ORDERING INFORMATION	
Size of trading unit	5 kg; 25 kg; 120-kg poly drum
Colour shades / degrees of gloss	<p>Tanne 59127 Frumento 59150 Canapa 59190 Orzo 59191</p> <p>Special colours on request</p> <ul style="list-style-type: none"> • The final colour is basically obtained from the inherent colour of the wood, the applied quantity, the colour of the impregnation and the colour of the finishing coat. • It is recommended to prepare a trial colour sample on the original substrate using the coating system selected in order to assess the final colour shade. • In order to ensure uniformity of the colour shade, use only material having the same batch number on a given surface. • In order to lay particular emphasis on the wood structure, the colour shade of Aquawood Primo selected should be darker than the one of Aquawood DSL HighRes 59127 ff.
Supplementary products	<p>ADLER Aqua-Cleaner 80080 Aquawood Primo A3 - A6 5453000310 ff Aquawood Intermedio HighRes MF 59119 Aquawood Intermedio HighRes spritzfertig 59120 ADLER Top-Cleaner 51696 ADLER Top-Care 7227000210 ADLER Windoor Care-Set 7229000300 Pullex Plus-Lasur 50314 ff Pullex Aqua-Plus 53101 ff</p>

OTHER INSTRUCTIONS

Durability / storage

At least 1 years in the original sealed containers.

Make sure the product is protected against moisture, direct sunlight, frost and high temperatures (above 30 °C).

Technical specifications

VOC content EU limit value for Aquawood DSL HighRes (cat. A/e): 130 g/l (2010). Aquawood DSL HighRes contains a maximum of 40 g/l VOC.

Safety-related information

Further information on the subject of safety during transport, storage and handling as well as disposal can be found in the relevant safety data sheet. The current version can be accessed on the Internet at **www.adler-lacke.com**.

The product is only suitable for the industrial and professional use

Inhaling paint aerosols whilst spraying must generally be avoided. This is ensured by correctly using a respiratory mask (combination filter A2/P2).
